

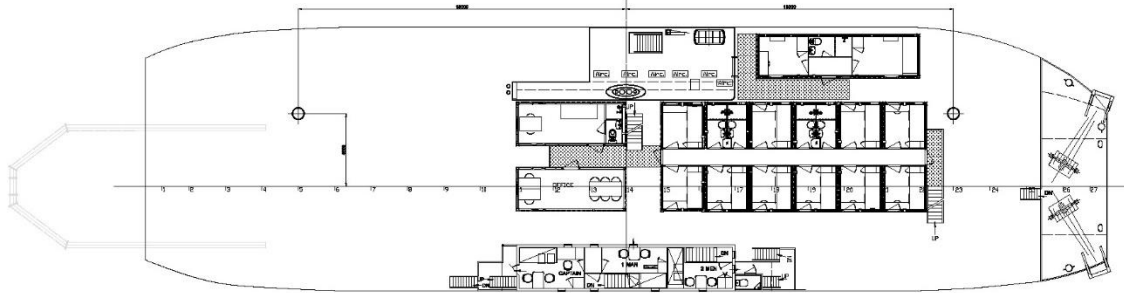
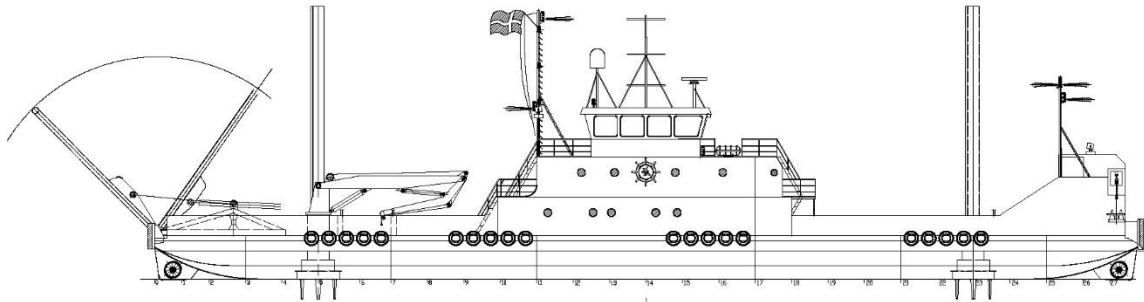
**OFFSHORE DP2 – DIVING – SALVAGE – SUPPORT VESSEL****SUSANNE A****Technical specifications:**

<b>Class:</b>	DMA Bureau Veritas Dynapos AM/AT R	<b>Speed and Consumption:</b>	7 knots / 3 m3 per day 5 knots / 2 m3 per day Stand-by / 1 m3 per day DP-mode / 2 m3 per day
<b>Flag:</b>	Danish		
<b>IMO No:</b>	9099183		
<b>Call sign:</b>	OZBE2		
<b>Trading area:</b>	A2		
<b>Gross Tonnage:</b>	469	<b>Deck equipment:</b>	Spud legs: 2 x 21 m  Cranes: 2 x 48 t/m SBG offshore 4 ts @ 12 m
<b>Dimensions:</b>	LoA 54.00 m Beam 14.70 m Draft 2.3-2.7 m		
<b>Main propulsion / machinery:</b>	2 Volvo Penta D16M, each 500 HP 2 Voith Schneider propeller		Optional: A-Frame: 1x 60 ts max lift Ro-Ro ramp aft, length 5.55m, beam 5.90m
<b>Thrusters:</b>	1 bow thruster DTG, 200 kW 1 stern thruster DTG, 200 kW		
<b>Auxiliary engines:</b>	3 Iveco-Diesel, each 100 KVA, 400V50Hz 1 Volvo D16, 400 KVA, 400V50Hz 1 Caterpillar 3406C, 320 KVA, 400V50Hz 1 Volvo Penta, hydr. power-pack 475HK		Optional: 4-point mooring with: 2 x bow anchor winch, 600 m wire 2 x bow anchor Delta flipper 1.0 t 2 x stern anchor winch, 600 m wire 2 x stern anchor Delta Flipper 1.0 t
<b>Cargo area:</b>	Loading cap. Total 400 ts Loading cap. Deck 300 ts Free working deck space 585 sqm Length 45 m Beam 13 m Fuel capacity 144 m <sup>3</sup> Freshwater 100 m <sup>3</sup>	<b>Bridge and Communication:</b>	1 x Navis NavDP 4000 (DP2) 1 x USBL Sonardyne Mini Ranger 2 2 x C-Nav GNSS 3055 DGPS/GLONASS 2 x Simrad GC80 Gyro compass 1 x Koden KGC-300 Satellite compass 1 x Radar Furuno 2 x Echosounder Furuno FCV 620 1x Transas ECDIS 2x VHF/DSC Sailor RT4822 1 x MF/DSC Sperry HC4500B 1 x VHF Sailor RT2048 1 x Satellite phone V-Sat 1x AIS Furuno FA-150 1x Navtex Nav-5 2x Epirb Sailor 4065 1 x AIS SART Sailor 2 x Search light 2000 watt
<b>Cargo equipment:</b>	Cargo lash rings on deck		
<b>Accommodation:</b>	22 single cabins. 1 double cabin. Galley and mess room. Allowed to carry 12 pax. Additional facilities for sea men.  Life-saving appliances are provided for 25 persons.		

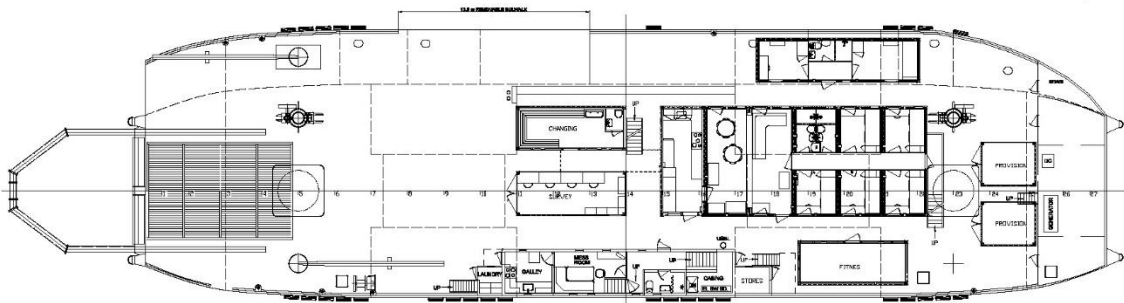


# OFFSHORE DP2 – DIVING – SALVAGE – SUPPORT VESSEL

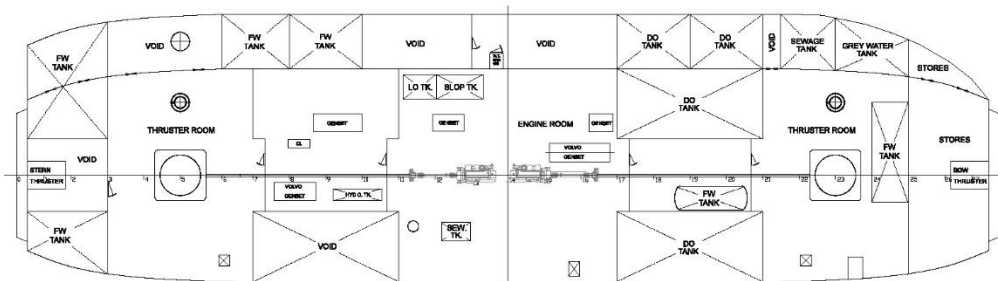
## SUSANNE A



A-DECK



MAIN DECK



TANKTOP