

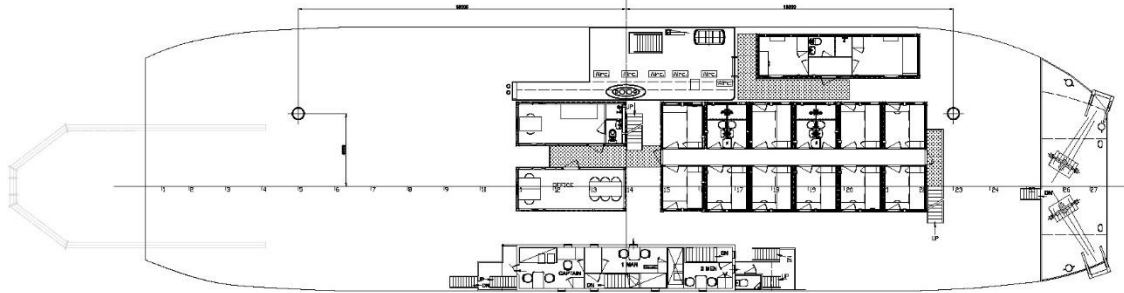
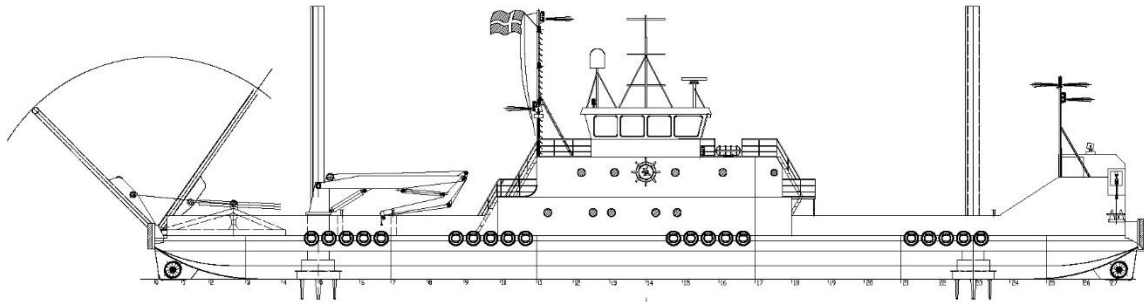
**OFFSHORE DP2 – DIVING – SALVAGE – SUPPORT VESSEL****SUSANNE A****Technical specifications:**

Class:	DMA Bureau Veritas Dynapos AM/AT R	Speed and Consumption:	7 knots / 3 m3 per day 5 knots / 2 m3 per day Stand-by / 1 m3 per day DP-mode / 2 m3 per day
Flag:	Danish		
IMO No:	9099183		
Call sign:	OZBE2		
Trading area:	A2		
Gross Tonnage:	469	Deck equipment:	Spud legs: 2 x 21 m Cranes: 2 x 48 t/m SBG offshore 4 ts @ 12 m
Dimensions:	LoA 54.00 m Beam 14.70 m Draft 2.3-2.7 m		
Main propulsion / machinery:	2 Volvo Penta D16M, each 500 HP 2 Voith Schneider propeller		Optional: A-Frame: 1x 60 ts max lift Ro-Ro ramp aft, length 5.55m, beam 5.90m
Thrusters:	1 bow thruster DTG, 200 kW 1 stern thruster DTG, 200 kW		Optional: 4-point mooring with: 2 x bow anchor winch, 600 m wire 2 x bow anchor Delta flipper 1.0 t 2 x stern anchor winch, 600 m wire 2 x stern anchor Delta Flipper 1.0 t
Auxiliary engines:	3 Iveco-Diesel, each 100 KVA, 400V50Hz 1 Volvo D16, 400 KVA, 400V50Hz 1 Caterpillar 3406C, 320 KVA, 400V50Hz 1 Volvo Penta, hydr. power-pack 475HK		
Cargo area:	Loading cap. Total 400 ts Loading cap. Deck 300 ts Free working deck space 585 sqm Length 45 m Beam 13 m Fuel capacity 144 m ³ Freshwater 100 m ³	Bridge and Communication:	1 x Navis NavDP 4000 (DP2) 1 x USBL Sonardyne Mini Ranger 2 2 x C-Nav GNSS 3055 DGPS/GLONASS 2 x Simrad GC80 Gyro compass 1 x Koden KGC-300 Satellite compass 1 x Radar Furuno 2 x Echosounder Furuno FCV 620 1x Transas ECDIS 2x VHF/DSC Sailor RT4822 1 x MF/DSC Sperry HC4500B 1 x VHF Sailor RT2048 1 x Satelite phone V-Sat 1x AIS Furuno FA-150 1x Navtex Nav-5 2x Epirb Sailor 4065 1 x AIS SART Sailor 2 x Search light 2000 watt
Cargo equipment:	Cargo lash rings on deck		
Accommodation:	22 single cabins. 1 double cabin. Galley and mess room. Allowed to carry 12 pax. Additional facilities for sea men. Life-saving appliances are provided for 25 persons.		

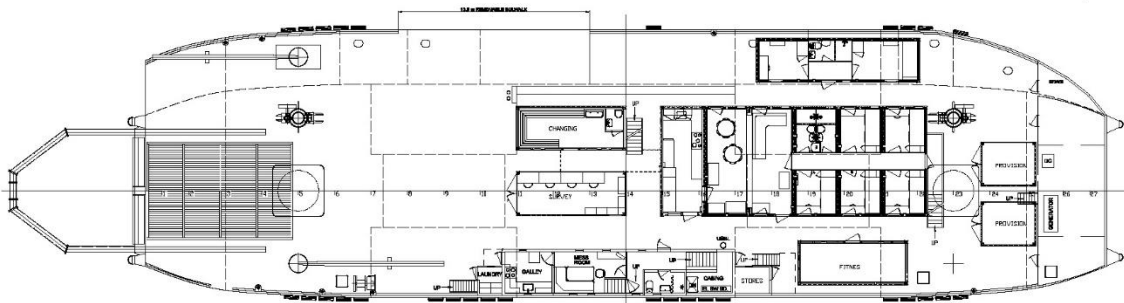


OFFSHORE DP2 – DIVING – SALVAGE – SUPPORT VESSEL

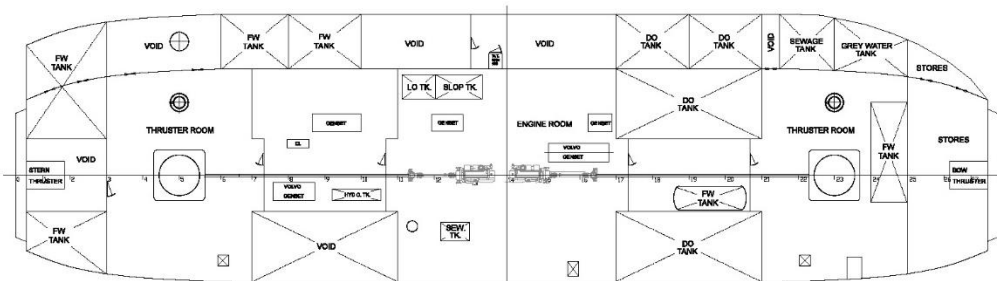
SUSANNE A



A - DECK



MAIN DECK



TANKTOP