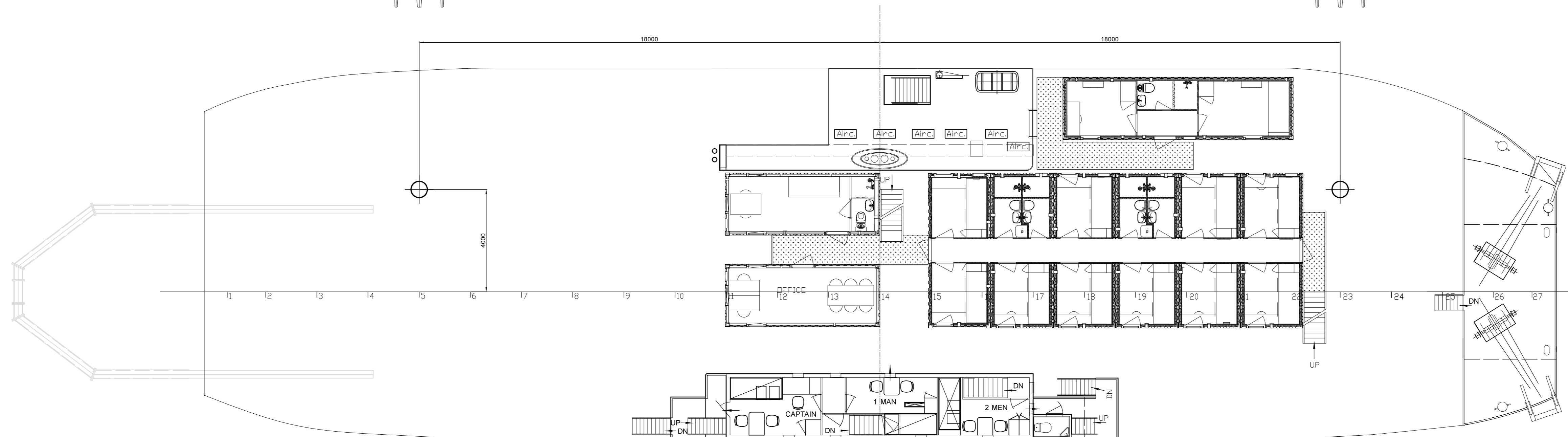
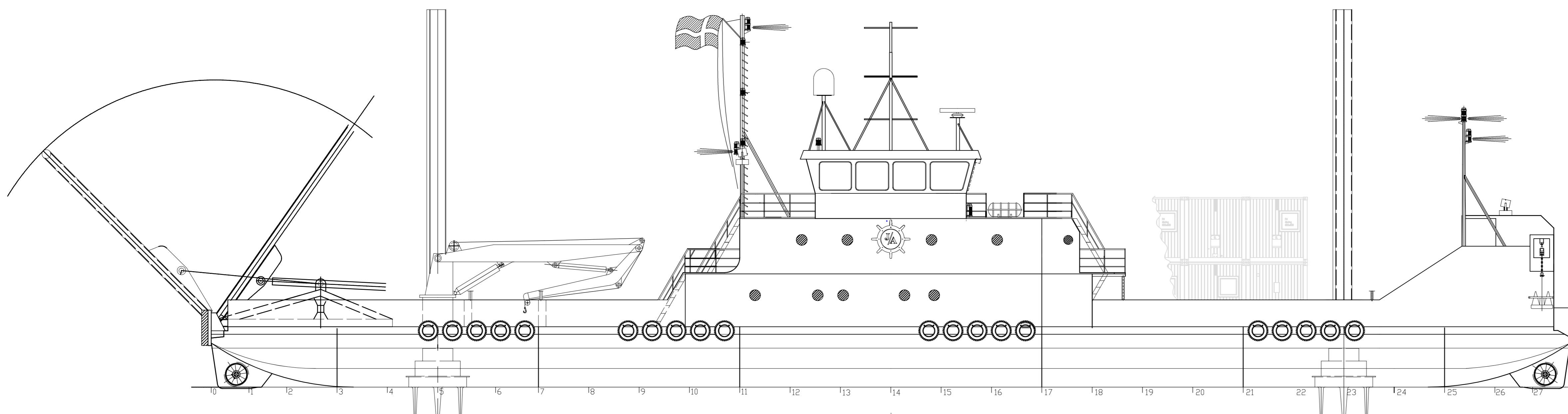
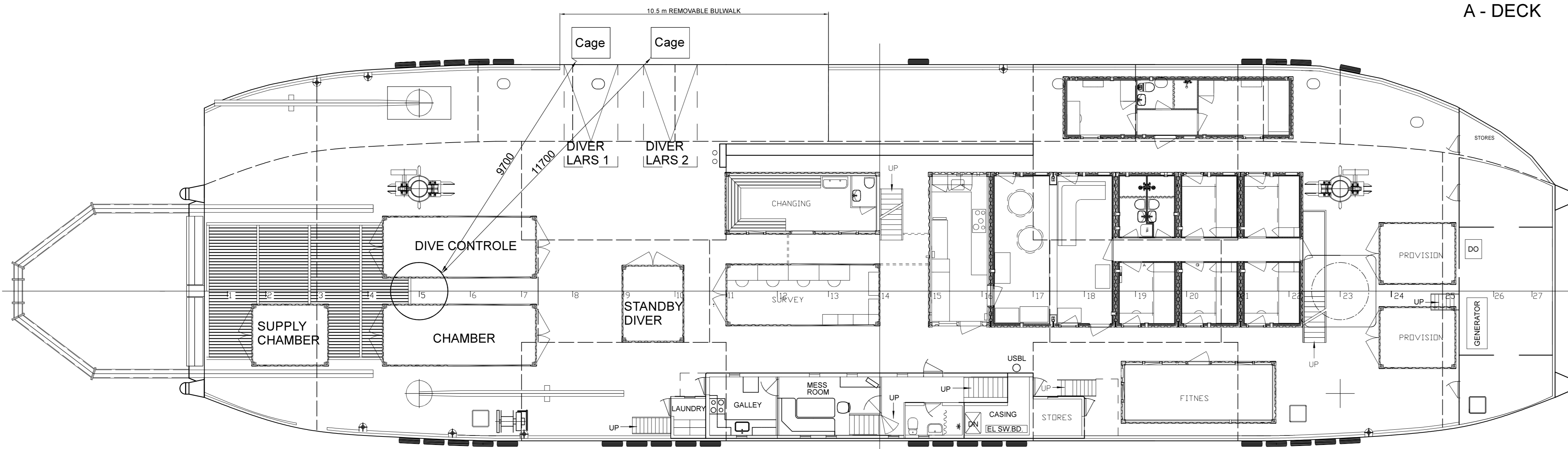


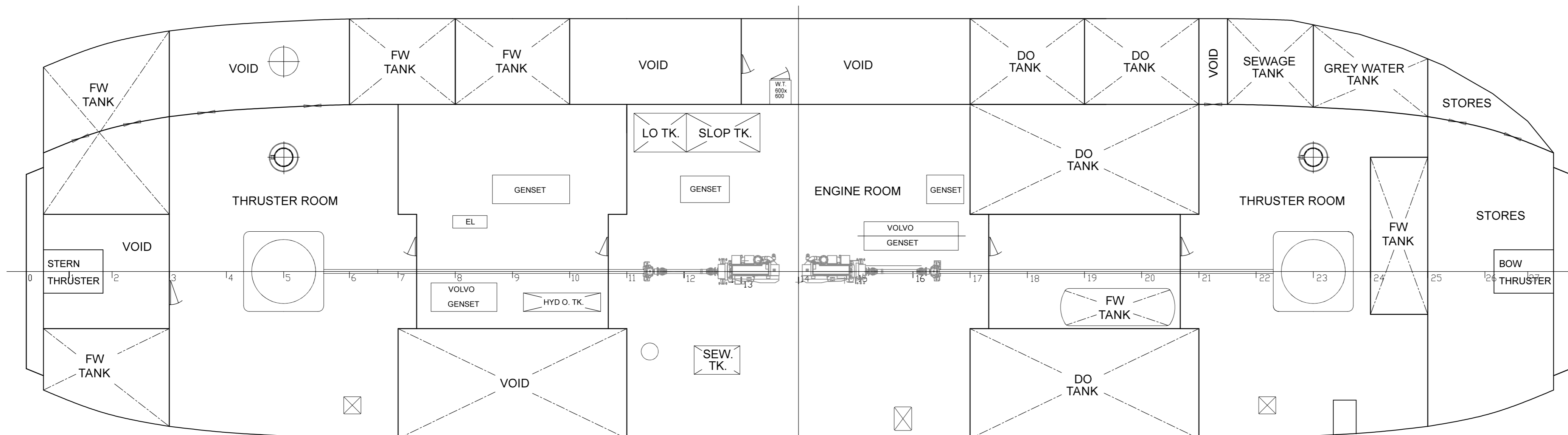
BRIDGE DECK



A - DECK



MAIN DECK



TANKTOP

MAIN DIMENSIONS

Length over all:	53,96 m
Length in waterline:	53,05 m
Breadth moulded:	14,70 m
Depth moulded:	2,40 m
Draft below keel:	1,60 m
Draft below propellers:	2,67 m

CONSULTING NAVAL ARCHITECTS JENS KRISTENSEN	Jagtvej 8 DK-5960 Marstal Pho.: +45 6253 3720	Drawn: AV/JK Date: 18.08.2020 Scale: 1:100
	M/V SUSANNE A GENERAL ARRANGEMENT - DP2 diving & cage	Drawing no.: JK 336.043.009.02